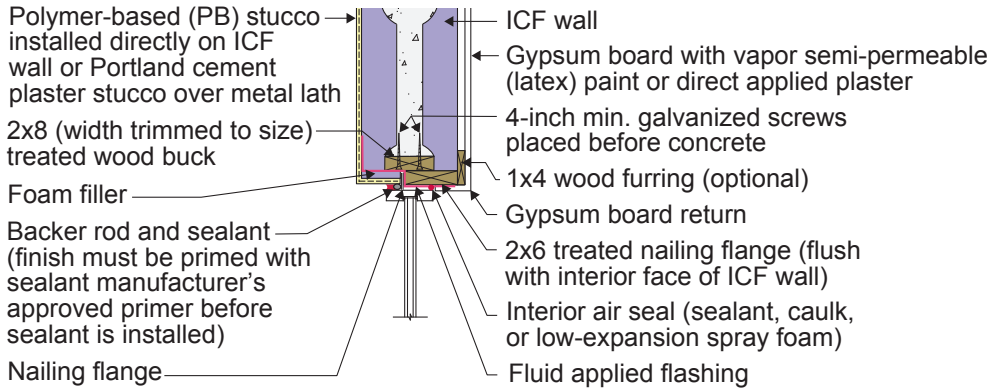
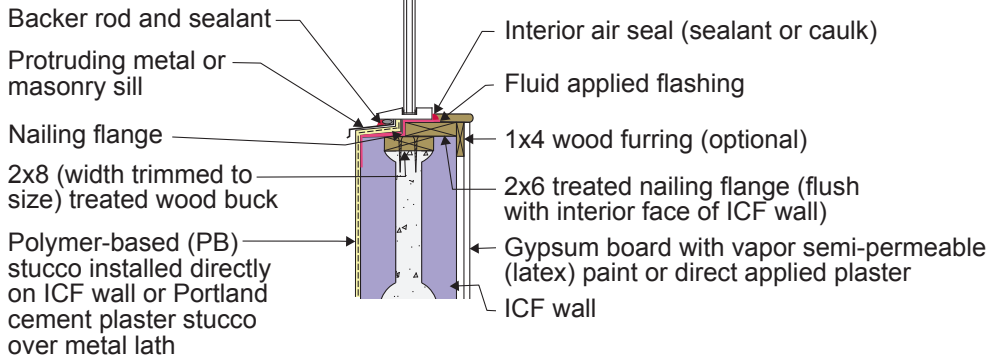


## W7 - ICF Wall with Stucco

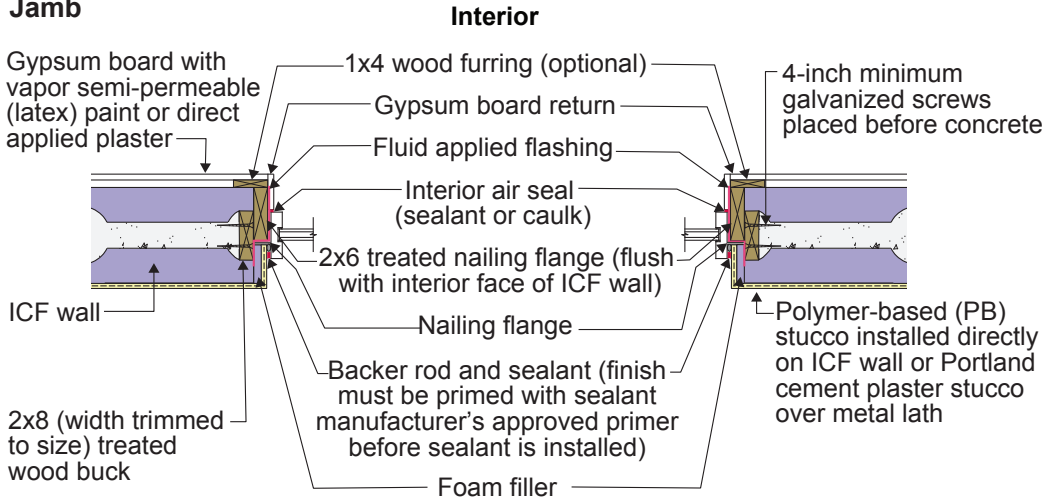
### Head



### Sill



### Jamb



## W7 - ICF Wall with Stucco

- Note: Always follow the window manufacturer's installation guidance. Not following manufacturer guidance may void the warranty.
- This is a "mass/storage wall" where rainwater is controlled by the stucco that is directly adhered to the insulating concrete form (ICF). This is not a "drained wall." Any water that passes through the stucco is stored, absorbed, and redistributed within the wall assembly and then dries to the exterior or interior or both. The window openings are drained to the exterior of the wall.
- The window rough opening is flashed to the face of the ICF with a fluid-applied membrane flashing. The window flanges are flashed to this water control layer.