



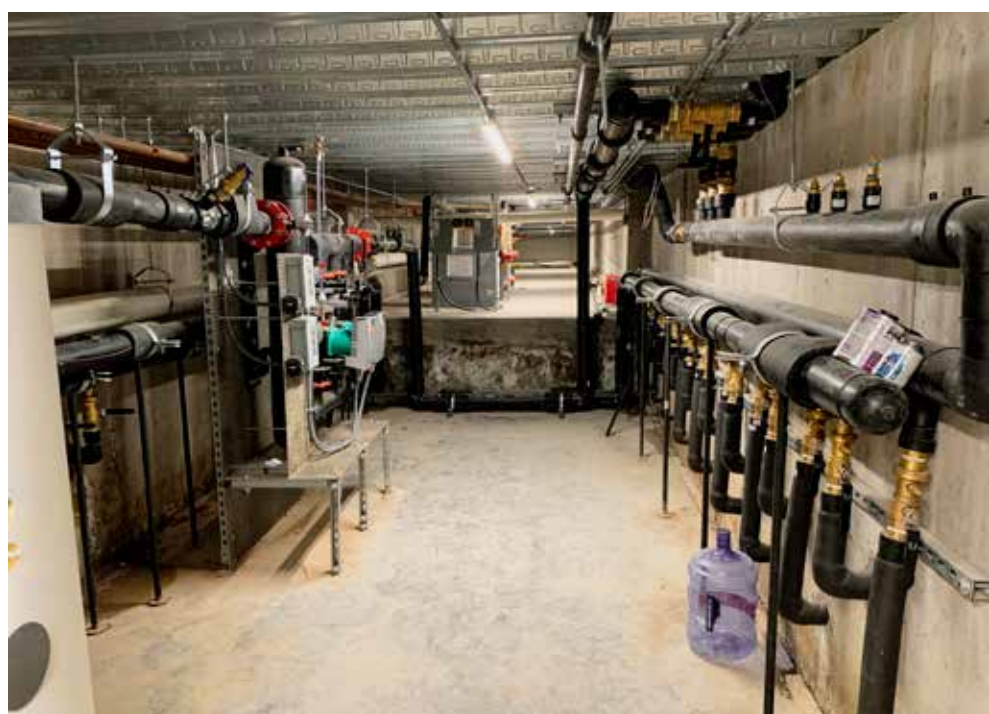
# Affordable Housing Concepts

Zero Place | New Paltz, NY | AHCLlc.net



Photos courtesy of Affordable Housing Concepts

“It is beautiful, safe, inviting, restful.” *Tenant*



## PROJECT DATA

## KEY FEATURES

- **Layout:** 1 bdrm, 1 bath, 1 fl, 1,222 ft<sup>2</sup>
  - **Climate:** IECC 6A, cold
  - **Completed:** March 2022
  - **Category:** Multifamily
- MODELED PERFORMANCE DATA**
- **HERS Index:** without PV 31; with PV -14
  - **Annual Energy Costs:** without PV \$750; with PV -250
  - **Annual Energy Cost Savings:** (vs typical new homes) without PV \$1,200; with PV \$2,250
  - **Annual Energy Savings:** without PV 8,050 kWh; with PV 14,900 kWh
  - **Savings in the First 30 Years:** without PV \$50,500; with PV \$93,400

- **Walls:** ICF, R-22 total: 11.25", housewrap, brick veneer or engineered wood.
- **Roof:** Flat roof, 16" open-web steel joists at 48" o.c.; concrete deck, rubber membrane.
- **Attic:** 12" R-46 open-cell + 4" R-28 closed-cell spray foam under roof deck.
- **Foundation:** Insulated basement, 11.25" R-22 ICF walls, 4" R-26 cc spray foam under slab.
- **Windows:** Triple-pane windows, U=0.17, SHGC=0.27, vinyl-framed, low-e, argon fill, casement style. Fixed solar panel awnings.
- **Air Sealing:** 1.9 ACH50. All common wall connections spray foamed. Drywall sealed at top and bottom plates and corner studs of party walls.
- **Ventilation:** ERVs, one per apartment. Supplies fresh air thru ducted HVAC. Draws from bath, kitchen, laundry, mech room. Sensored and manual boost controls.
- **HVAC:** Ground source heat pumps, 3.4 COP. Variable speed pump.
- **Hot Water:** Two central ground source heat pumps (3.2 COP) with four 162-gallon tanks provide space and water heating to all units. Risers with recirculation pumps distribute water to each line of apartments. Each apartment has a manifold to distribute hot water to each fixture.
- **Lighting and Appliances:** LED lighting, ENERGY STAR appliances.
- **Solar:** 248 kW of PV on roof and as window awnings.
- **Energy Management System:** Energy monitoring system measures energy usage of each load in each unit. Apps let tenants track their energy and water use.
- **Other:** Rooftop deck, ADA units, walkable neighborhood. Several EV charging stations.

## CONTACT

Keith Libolt  
845-255-3853  
Keith@ahcllc.net

