

CONTINUOUS FILLET BEAD OF URETHANE SEALANT BTW 2" XPS BOND BREAK AND FOUNDATION WALL

CONTINUOUS FILLET BEAD OF URETHANE SEALANT BTW 2" XPS BOND BREAK AND CONCRETE SLAB

2" XPS BOND BREAK

4" CONCRETE SLAB

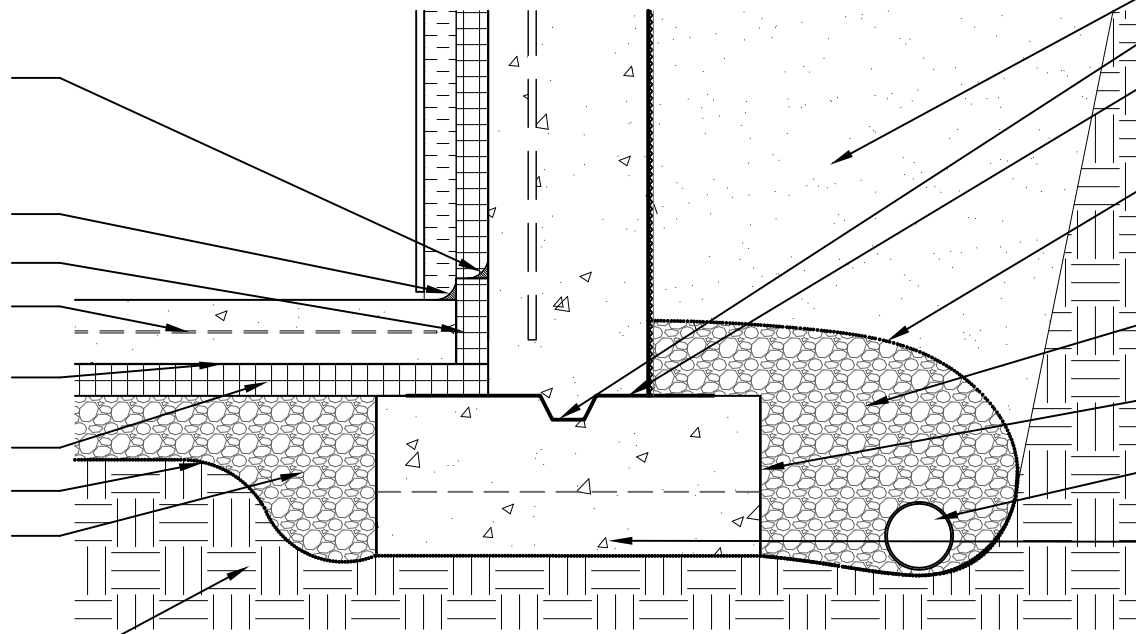
6 MIL POLYETHYLENE VAPOR BARRIER

2" XPS RIGID FOAM SLAB INSULATION

FILTER FABRIC

4" GRAVEL PAD (NO FINES)

UNDISTURBED NATIVE SOIL OR ENGINEERED FILL AS DETERMINED BY SOIL CONDITIONS



FREE DRAINING BACKFILL

KEYWAY

LIQUID-APPLIED CAPILLARY BREAK (MUST DRY TACK FREE)

FILTER FABRIC PLACED UNDER PERIMETER DRAIN AND WRAPPED AROUND GRAVEL

COARSE GRAVEL (NO FINES)

CONTINUOUS CONCRETE FOOTING

4" PERFORATED PERIMETER DRAIN

4" PVC PIPE THROUGH BOTTOM OF FOOTING CONNECTING INTERIOR AND EXTERIOR GRAVEL BEDS